

Paris Region Exhibitors Guide

Smart City Expo World Congress

Barcelona, 5-7 November 2024



**CHOOSE
PARIS
REGION**





**CHOOSE
PARIS
REGION**

CHOOSE PARIS REGION

Choose Paris Region is Paris Region's international attractiveness agency, which promotes the region's influence on the international stage, and provides a high-quality welcome and services to investors, visitors and talent from all over the world, while ensuring the Region's sustainable and balanced development.

Through its knowledge of the Regional economic ecosystem, the agency attracts and supports investors, and facilitates the setting up of companies thanks to targeted, personalized services and partners. It contributes to the development of strong, innovative and sustainable industrial sectors.

Finally, the Agency supports and provides resources for international talent who want to settle and live in Paris Region for its quality of life and find the perfect work-life balance.

Chairwoman: Alexandra Dublanche
CEO: Lionel Grotto

CONTACT

Sevinc AR CHIMOT
Cleantech & Smart City Expert

2 rue Simone Veil
93400 Saint-Ouen-sur-Seine

+33 (0) 6 25 44 55 77
sevinc.ar@chooseparisregion.org

www.chooseparisregion.org

Aquaphys, Key to Proactive Water Management



MONITOR YOUR WATER LIVE



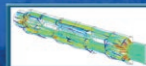
OPTIMUM UVC LED STERILISATION



UVC LED sterilizer reactor guaranteeing the health safety of your installations

CUTTING EDGE PHYSICAL WATER TREATMENT

We bring together skills
in classic filtration, industrial processes
and tertiary heating applications.



Aquaphys

Water & Energy Control

CONTACT

Alexandre PROFIT
CEO

11 avenue du Maréchal Lyautey
78170 La Celle Saint Cloud

+33 (0) 6 86 56 44 33
alexandre.profit@aquaphys.com

www.aquaphys.com

AQUAPHYS

Aquaphys' mission is clear: to provide individuals and businesses worldwide with intelligent water treatment solutions, supported by cutting-edge data, to build a sustainable future.

Our innovative platform not only serves the "last mile" but also integrates advanced physical water treatment techniques, addressing critical issues such as scaling, corrosion, and fouling without the use of chemicals. By leveraging real-time monitoring of water quality, we empower companies and climate transition leaders to measure, monitor, and optimize their water consumption effectively – from the point of entry to the smallest operational details.

With the capability to achieve quantifiable water savings of up to 25%, Aquaphys delivers unparalleled insights and data granularity, enabling organizations to implement effective water usage strategies. Our expertise extends to asset management solutions, which include pressure sensors, pH, and conductivity monitoring, facilitating proactive maintenance through a digital logbook.



CAP DIGITAL

cap.digital
Paris Region

Founded in 2006, Cap Digital is the hub of high-impact digital innovation.

Bringing together more than 800 members, including SMEs, large & mid-size companies, universities/research laboratories, as well as investment funds and numerous local authorities, Cap Digital is commissioned by the French government and the Paris and Hauts-de-France Regions to implement their innovation policies and is now recognized as one of Europe's leading hubs for digital innovation and ecological transition.

Cap Digital supports its members in developing, testing and deploying innovations with high economic, environmental and societal impact, in four key technological fields: data, IA, cloud computing and immersive technologies.

CONTACT

Benoit BOURDIER
Smart & sustainable territories
Community Leader

14 rue Alexandre Parodi
75010 Paris

+33 (0) 6 38 05 56 92
benoit.bourdier@capdigital.com

www.capdigital.com

Trace - Reuse - Recycle



EXCHANGE DATA



STRUCTURING THE
SUPPLY CHAIN
-
MEASURING



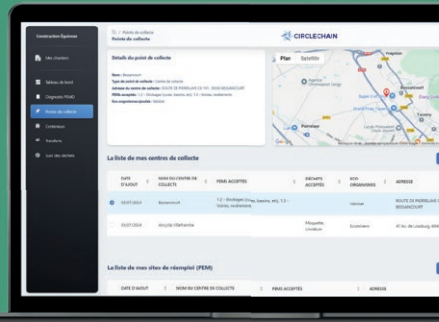
CERTIFIED
TRACEABILITY



COLLABORATIVE PLATFORM

Digital product passport
End-to-end traceability
Certification and notarization
Data exchange
Supply chain

Traceability ensured by Blockchain
Distributed data
Trust and transparency



CIRCLECHAIN

CONTACT

Philippe OGIER
President

25 bis rue Saint-Georges
94700 Maisons-Alfort

+33 (0) 6 75 65 70 88
philippe.ogier@circlechain.green

www.circlechain.green

CIRCLECHAIN

Circlechain is the digital platform for the Circular Economy, powered by a consortium blockchain. It is integrated with tools for waste disposal sites and construction sites, enabling access to the necessary information to optimize waste management, elaborate end-to-end traceability, and improve reuse rates.

Circlechain makes feasible the sharing of essential information regarding the quality and nature of reusable materials and products, enhancing their proper management, handling and treatment.

Additionally, Circlechain establishes a precise Carbon Footprint assessment of the waste treatment and recovery process. It provides powerful features for reporting and automated regulatory declarations.

Our Blockchain technology brings an ultimate level of security and creates the conditions for a fully trusted collaboration.



CLUSTER EAU MILIEUX SOLS PARIS ILE-DE-FRANCE

Our NGO, Cluster Eau Milieux Sols, serving its members and Paris Region, to build a collaborative innovation dynamic in the sectors of water, environment, soil and biowaste.

In 2024, the Cluster has 200 members, from a wide range publics and private entities including local authorities, large corporates, midcaps, SMEs, startups and other NGO's.

Key Data:

- 30 events a year
- 200 members structures in 2024
- Over 3,500 members and partners

Business Areas:

- Urban Water
- Biowaste
- Urban soils
- Innovation - Eco-circularity
- Environments - Biodiversity
- Digital for ecological transition

CONTACT

Carolina HENAO
Senior Project Manager
in Ecology and innovation
in urban planning

2 avenue Jean Jaurès
94600 Choisy-le-Roi

+33 (0) 6 26 25 75 53
carolina.henao@clusterems.org

www.clusterems.org



COPERNILABS



CONTACT

Jean KOÏVOGUI
CEO

29 rue Blanche
75009 Paris

+33 (0) 6 19 37 07 65
jean.koivogui@copernilabs.com

www.copernilabs.com

Copernilabs is a startup specializing in applied artificial intelligence and emerging technologies. It democratizes algorithmic surveillance for small and medium-sized companies on a global scale.

ThuliumX, developed by Copernilabs, is an advanced multimodal and multisensory platform. It aims to make algorithmic surveillance accessible and cost-effective for all industries.

This platform is flexible, modular, scalable, and easily integrates with clients' existing sensors.



DESCARTES DÉVELOPPEMENT ET INNOVATION

Descartes Développement & Innovation (DDI) is the information and promotion association of the Sustainable City Technopole at the heart of Cité Descartes, located in the East of the Paris Region. DDI also operates a Fablab, an Incubator and a French Tech Community as part of its scope of operations.

A Sustainable City refers to an urban space at the crossroads of the economic, social and environmental pillars necessary for sustainable development. It simultaneously meets citizens' expectations in terms of comfort, services and resilience, as well as environmental challenges and the needs of future generations.

Within Paris-Vallée de la Marne territory, DDI facilitates serendipitous connections between academia, institutions and businesses with a state-of-the-art research ecosystem in the establishment of a Sustainable City.

In addition, DDI has established partnerships with corporates to create collaborations that promote seamless networking, experimentation and open innovation.

Supporting the policy of regional development based on innovation, the Technopole Descartes promotes cross-fertilization and offers innovative companies, whatever their level of maturity, personalised support: project engineering, assistance with public and private financing, ecological transition, animation of networks, organisation of scientific conferences, etc.

CONTACT

Jean-Christophe DE TAUZIA
CEO

2 B rue Alfred Nobel
77420 Champs-sur-Marne

+33 (0) 1 60 53 62 45
jcdetauzia@

descartes-devinnov.com

www.descartes-devinnov.com/en

Innovative
technologies to
optimise and
decarbonise
tomorrow's mobility



CONTACTS

Julian GARBISO - CEO
+33 (0) 7 50 86 56 67
julian.garbiso@floware.fr

Mathieu LAFARGE - COO
+33 (0) 6 98 94 92 07
mathieu.lafarge@floware.fr

Drahi X Novation Center
91120 Palaiseau

www.floware.fr

FLOWARE

Floware: Smart Solutions for Urban Mobility

Floware offers local authorities an innovative solution for analyzing and optimizing mobility flows.

By combining intelligent sensors and an intuitive data visualization platform, we provide real-time diagnostics, predict the impact of new projects and policies, and monitor their evolution over time.

Our technology supports strategic decision-making to enhance traffic flow, improve infrastructure, and promote more efficient, environmentally-friendly mobility.

Floware's tools easily integrate with existing systems, ensuring a seamless experience for our users. Discover how cities are already benefiting from Floware to improve infrastructure and enhance the quality of life for citizens.



IMPULSE PARTNERS

Impulse Partners, based in Paris, is recognized as a leading strategy consulting firm with a strong focus on Smart City initiatives.

It specializes in boosting business growth, digital transformation, and addressing environmental issues along with changing market needs. Impulse Partners is well-known for its expertise in construction, public works, real estate, energy, and the public sector, boasting a vast portfolio and strong connections with key players in these fields.

His mission includes finding new opportunities, developing innovative business models, and launching new ventures.

It offers strategic advice on innovation, promotes an entrepreneurial mindset, supports smart investments, and creates spaces dedicated to innovation.

Impulse Partners differentiator is a worldwide ecosystem of more than 5 000 qualified startups, 150 partners: corporates and public authorities, 100 investment funds, and 50 R&D centers.

CONTACT

Jeeyoun HO
Senior Consultant

130 rue de Lourmel
75015 Paris

+33 (0) 1 83 64 40 25
jeeyoun.ho@impulse-partners.com

www.impulse-partners.com



KEYROS

KEYROS

Keyros rethinks the management of crisis situations by associating it with the management of the time available to act.

We provide decision-makers, faced with an emergency situation, with the means to make the most relevant choices to minimize the human, environmental and economic repercussions of these events.

Keyros develops Projections, pionnier crisis management tool for immediate visual anticipation. By showing you in real time- as forecasts are issued (floods, heatwaves, marine submersions)- where and when your critical infrastructures will malfunction, Projections helps you to anticipate and prioritise the actions to be taken in order to get out of the crisis as quickly as possible and at a lower cost.

CONTACT

Servane GUEBEN-VENIÈRE
Scientific Direction, CEO

Keyros (siège)
3 bis rue Jules Vallès
75011 Paris

+33 (0) 6 63 29 37 26
contact@keyros.org

www.keyros.org

Artificial Intelligence for resource preservation

After more than three years of research and development, Leakmitted has developed a unique artificial intelligence algorithm that can detect the 20 to 30% of the network containing 80% of the leaks. Our teams of leak searchers then locate your leaks in these areas.



Industry challenges

Missing or inaccurate data, aging networks, limited human and financial means



Gaps

GIS availability, performance measurement, client adoption



Solution

Continuous data and AI improvement, partnerships with industry experts



CONTACT

Hubert BAYA TODA
CEO

30 bis rue du vieil abreuvoir
78100 Saint-Germain-en-Laye

+33 (0) 6 31 63 30 71
hubert.baya-toda@leakmitted.com

www.leakmitted.com

LEAKMITED

Leakmitted is a French deeptech startup, founded in 2019 and multiple award-winning, with the goal of using artificial intelligence for water management, specifically in the field of leak detection.

Leakmitted has developed an AI model able to identify the 20 to 30% of the network that contains 80% of the leaks.

The company works with both local authorities and private operators, and its solutions have already proven effective in several countries (France, Italy, United Kingdom, Morocco).



Métropole
du Grand Paris

CONTACT

Agathe FOURQUET
Urban Innovation
Project Manager

5-19 avenue Pierre Mendès France
75013 Paris

+33 (0) 6 70 74 13 99
agathe.fourquet@
metropolegrandparis.fr

www.metropolegrandparis.fr/en

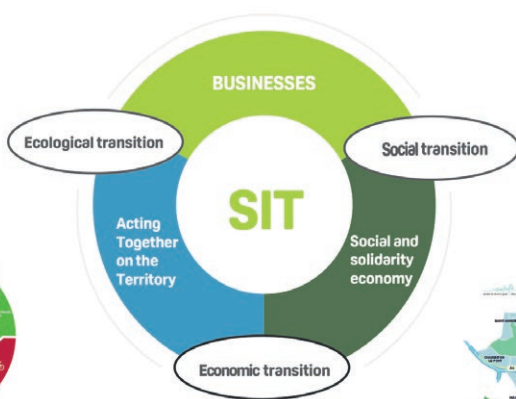
MÉTROPOLE DU GRAND PARIS GREATER PARIS METROPOLIS

The Greater Paris Metropolis, created on January 1, 2016, comprises 131 municipalities and 11 territories, representing nearly 7.2 million residents.

It exercises powers in five main areas: economic, social, and cultural development, environmental protection, metropolitan space planning, local housing policy, and management of aquatic environments and flood prevention.

Its initiatives aim to improve residents' living conditions, reduce territorial inequalities, and develop a sustainable urban model.

The Metropolis also plays a key role both locally and internationally, contributing to global growth and addressing economic, social, and environmental challenges.



Un Territoire
engagé pour la nature



PARIS EST MARNE&BOIS

Paris Est Marne & Bois is an intercommunal entity that brings together 13 municipalities and 520,000 residents in the eastern area of the Paris Region.

The area is bordered by the Bois de Vincennes and the Marne River, directly adjacent to Paris. It is home to over 53,000 businesses, 94% of which are small and medium-sized companies (SMEs), along with a few large economic players and more than 1,600 organizations in the Social and Solidarity Economy sector.

Operating under a "city cooperative" model, Paris Est Marne & Bois established an innovation hub at its inception and is actively implementing its Sustainable and Innovative Territory (TDI) policy. To achieve this, it relies among other things on pilot projects to accelerate environmental, economic, and social transitions, guided by the six key areas of the PCAET (Climate-Air-Energy Plan) adopted in May 2022.

This policy highlights an innovative approach to engaging local stakeholders, drawing inspiration from the United Nations Sustainable Development Goal 17 on partnerships for sustainable development.

CONTACT

Sokhna WADE
Communication Director

1 place Uranie
94140 Joinville

+33 (0) 6 38 61 14 58
sokhna.wade@pemb.fr

www.parisestmarnebois.fr

Visit our website : Stooly.fr

SMART SEAT DESIGNED IN FRANCE



Sustainable



As seen
on TV



STOOLY

Stooly is a French brand of foldable, stretchable, and expandable furniture, dedicated to openness and hospitality.

Opening and closing in origami style, Stooly furniture adapts to surfaces and space shapes thanks to their flexibility and modularity.

Made of ultra-resistant honeycomb cardboard, the furniture is as stylish as it is eco-friendly. Lightweight, quick to set up, easy to store, and simple to use, they have become the number one ally in the events world as they allow for setting up guests in record time.

Equally suitable for individuals and professionals, the Stooly range is the simple and effective solution for opening up spaces and accommodating without limits!

CONTACT

Delphine LAU
Cofounder & General Manager

69 avenue de la République
75011 Paris

+33 (0) 9 73 12 26 45
pro@stooly.fr

www.stooly.fr



UNIVERSITÉ GUSTAVE EIFFEL



CONTACT

Frédéric BOURQUIN
Vice President Innovation

14-20 boulevard Newton
77420 Champs-sur-Marne

+33 (0) 1 81 66 84 58
frederic.bourquin@univ-eiffel.fr

www.univ-gustave-eiffel.fr/en

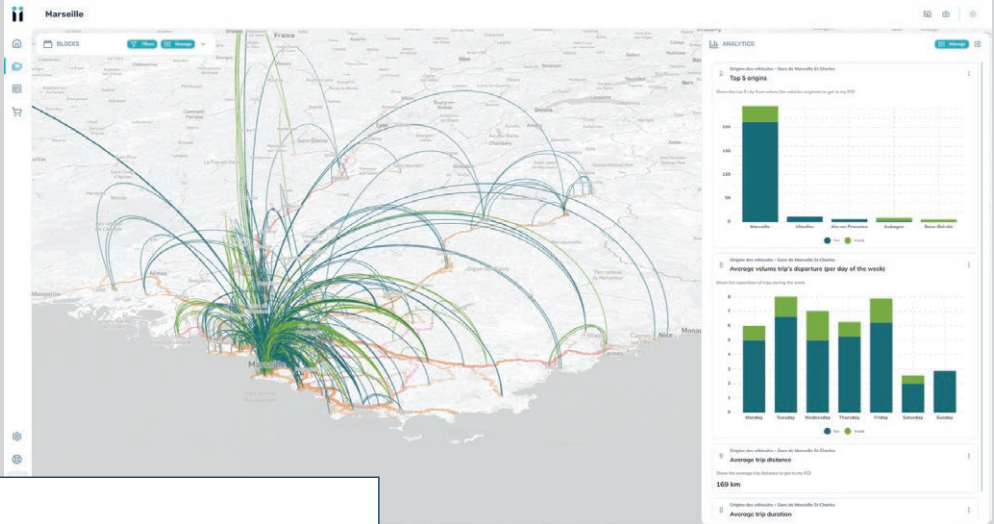
We are a university created in 2020 based on an innovative threefold model combining a university, schools, and a research centre, with the aim of transforming life and cities.

We are the culmination of a shared history that began over 20 years ago between UPEM, IFSTTAR, ESIEE Paris, ENSG, EIVP and Éav&t*. By pooling multiple strengths in the fields of education and research, we create better synergies, thereby offering our different audiences a broader range of skills.

We train young people, employees and citizens at all levels and provide scientific insights to society as a whole and to public policy makers.

We are committed to the theme of sustainable cities and represent, by ourselves, a quarter of French research in this field and contribute to creating a better societal and environmental future.

* Université Paris-Est Marne-la-Vallée (UPEM), Institut français des sciences et technologies des transports, de l'aménagement et des réseaux (IFSTTAR), ESIEE Paris, l'École nationale des sciences géographiques (ENSG-Géomatique), École des Ingénieurs de la Ville de Paris (EIVP), École d'architecture de la ville & des territoires Paris-Est (Éav&t).



URBAN RADAR

Urban Radar's platform provides businesses and municipalities with actionable insights to take actions towards better urban logistics: loading zone planning, lockers and logistics hubs location strategies, and analytics of regional logistics flow.

We draw our insights from multiple private geolocation data sources.

CONTACT

Philippe RAPIN
CEO

58 avenue du Général Eisenhower
51100 Reims

+33 (0) 7 82 01 30 62
philippe@urbanradar.io

www.urbanradar.io



VECTUEL

Urban planning is a technical field that can be made accessible to a broader audience by creating immersive and educational interfaces.

Making better decisions, improving communication, and fostering engagement through innovative 3D tools has been our mission for the past 15 years.

As a specialist in 3D representation of urban projects, Vectuel provides innovative solutions for understanding to public and private project leaders, enabling them to manage the city of today and build the city of tomorrow.

CONTACT

Gilles GUYARD
CEO

10 passage du chantier
75012 Paris

+33 (0) 6 17 04 68 75
g.guyard@vectuel.com

www.vectuel.com



VERSAILLES GRAND PARC



VersaillesGrandParc
communauté d'agglomération

At the gates of Paris, Versailles Grand Parc (270,000 inhabitants - 130,000 jobs) supports all initiatives aimed at improving the quality of life of its residents by making its territory more efficient and more secure with new technologies.

With one of the largest video protection systems in France, our territory has initiated a new dynamic to move to a more global approach integrating the needs of the smart city: understanding the use of public spaces, answering questions about new uses .

In the field of data, thematic observatories are set up to offer everyone a global vision enriched by real-time qualitative information to understand the territory and improve public service. A decision-making tool, all of this data is brought together in a digital twin which allows, in a "sandbox", to test new scenarios.

In the field of mobility, Versailles Grand Parc has developed expertise in traffic studies, circulation, etc. A player in the European UPPER project, it constitutes, with a group of partners, an innovative mobility observatory.

By launching this year an innovation and incubation program dedicated to impactful companies, Versailles Grand Parc and its ecosystem of economic and academic players is the welcoming territory for all companies and deeptech project leaders wishing to experiment and develop their activities.

CONTACT

Julie HODEZ
Smart City Manager

6 avenue de Paris
78000 Versailles

+33 (0) 6 10 07 31 94
julie.hodez@agglovgp.fr

www.versaillesgrandparc.fr



WALTR

Waltr, a pioneering player in monitoring pollutant emissions via spatial imaging and ground monitoring, helps clients assess and reduce their air pollution impact by measuring environmental performance and prioritizing corrective actions based on evolving regulatory, social, and economic criteria.

Based in Toulouse and Nantes, Waltr utilizes spatial technology coupled with AI to precisely identify, measure, and map gas and particulate pollutant emissions in cities, industrial sites, and airport or port infrastructures.

Waltr also supports its clients through the change management with guidance provided by social and environmental psychologists.

With a team of 20, Waltr aims to be a leading independent European provider of emission monitoring and spatial data for businesses and public entities focused on ecological transition, socially responsible investments, and corporate social responsibility.

CONTACT

Marion MOREIRA
R&D and CSR Project Manager
+33 (0) 7 66 17 45 06

Living lab GreenTech
4 Avenue Pasteur
94160 Saint-Mandé

Waltr (Siège)
Parc Technologique du Canal
14 avenue de l'Europe
31520 Ramonville Saint-Agne

waltr@waltr.fr

www.waltr.fr



Reinvent public spaces
with our cooling spots

SEVERAL FUNCTIONS

ACCESS FOR ALL

REMOTE MANAGEMENT



WATER CONNECT

Accessible cooling spots for universal well-being.

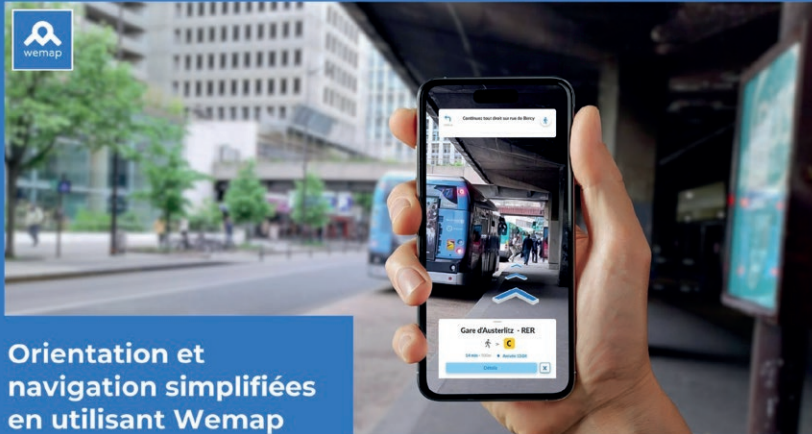
Our commitment: Making cities cooler and greener through innovative and inclusive solutions to combat Urban Heat Islands.

CONTACT

Pascal PONCET
Managing Director

+33 (0) 9 50 40 45 75
contact@waterconnect.fr

www.waterconnect.fr



Orientation et navigation simplifiées en utilisant Wemap



WEMAP

Wemap provides advanced solutions in mapping, localization, and guidance for smart mobility.

Trusted by leaders such as SNCF, RATP, Keolis, the City of Paris, JC Decaux, and the Paris 2024 Olympic Games, Wemap's technologies are essential for simplifying orientation and navigation in even the most complex spaces.

Combining 3D maps and augmented reality, Wemap developed a unique vision-based positioning system that ensures precise localization in any environment, indoor or outdoor.

Products integrating Wemap technology have generated over 1 billion views.

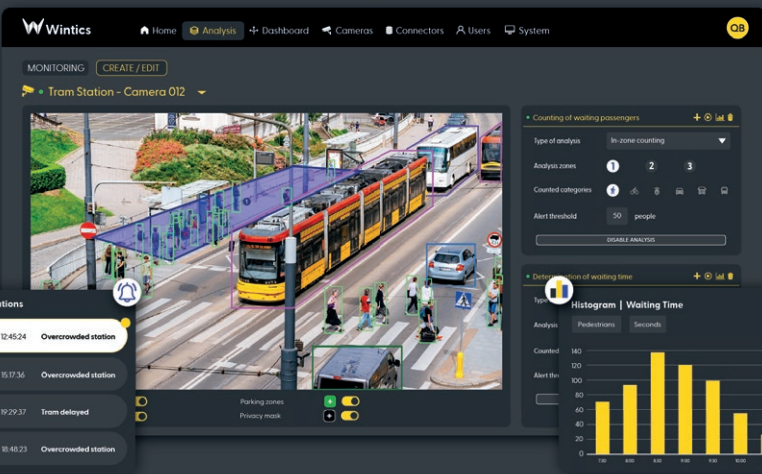
CONTACT

David ZAGUEDOUN
Head of Sales

3 cité Paradis
75010 Paris

+33 (0) 7 68 74 42 34
david@getwemap.com

www.getwemap.com



WINTICS

Thanks to AI, Wintics maximizes the potential of your video system, turning it into a powerful monitoring tool.

Wintics software generates a wide range of indicators by analyzing in real-time any camera: safety & security alerts, traffic data, parking availability, waiting time calculation, illegal dumping detection, etc.

The system outstands for accuracy and easiness to use. It is deployed at scale in many environments: securization of Paris Olympics for French Ministry of Interior, mobility analyses for over 50 cities, monitoring of passenger experience in airports and touristic sites, crowdedness monitoring in public transportation, etc.

CONTACT

Matthias HOULLIER
CEO

46 rue René Clair
75018 Paris

+33 (0) 6 70 92 11 68
matthias.houllier@wintics.com

www.wintics.com

CONTACT

Sevinc Ar Chimot
Cleantech & Smart City Expert

+33 (0) 6 25 44 55 77
sevinc.ar@chooseparisregion.org

www.chooseparisregion.org



Catalogue réalisé par Choose Paris Region
octobre 2024, CPR/Rb.

Contenu et photos fournis par les
exposants-partenaires, tous droits
réservés.